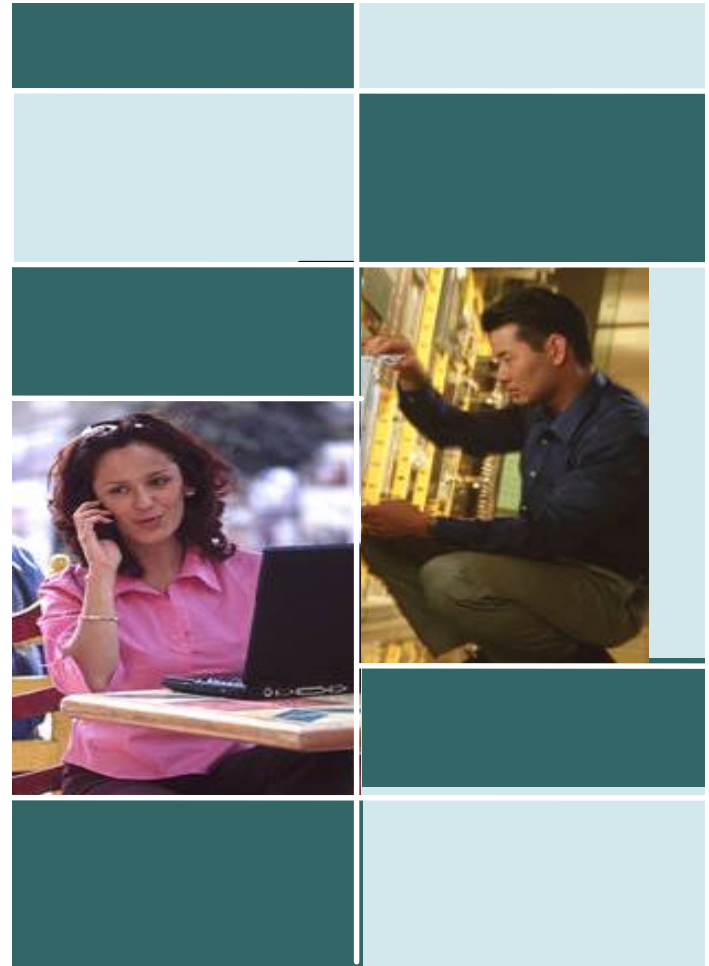




- -  
IP

**mskim@cisco.com**

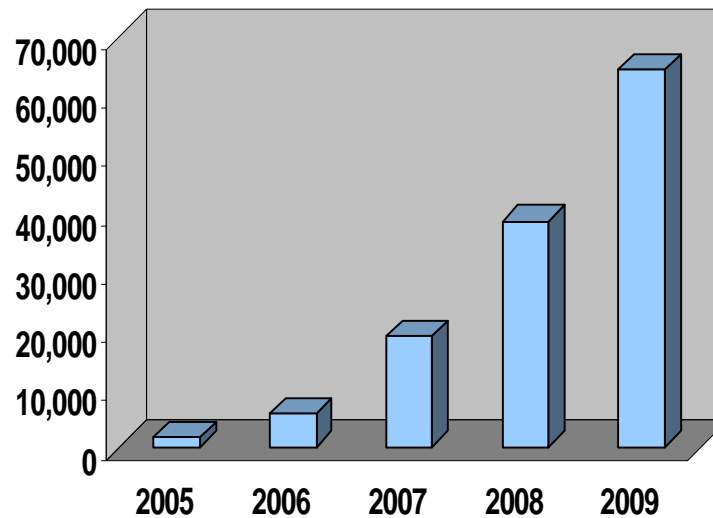
# Voice over WLAN



# VoWLAN



Millions of VoWLAN Clients



: ABI Research Q104

# VoWLAN

- 가
- ,
- 
- 
- IP
- 
- 
- 
- 
- 
- VIP





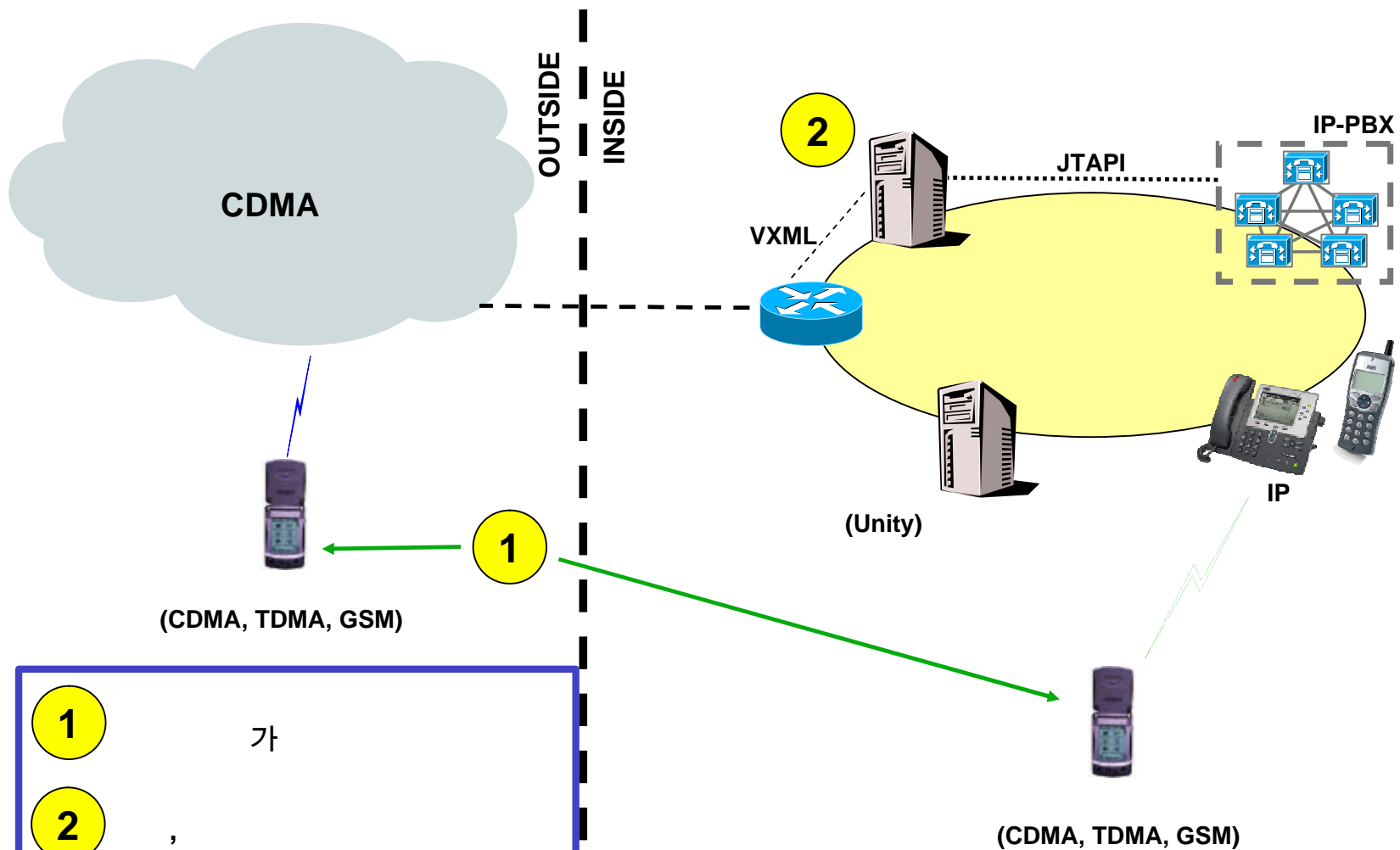
# IP 7920

- ,
- 11Mbps  
WPA
- (CCKM)
- (Extension Mobility)
- XML
- , PTT ( - - )



**isco Wireless  
IP Phone 7920**

# 1.



1

가

2

,

## 2.

...

- IP PTT
- 
- MCS
- / /



UHF



VHF

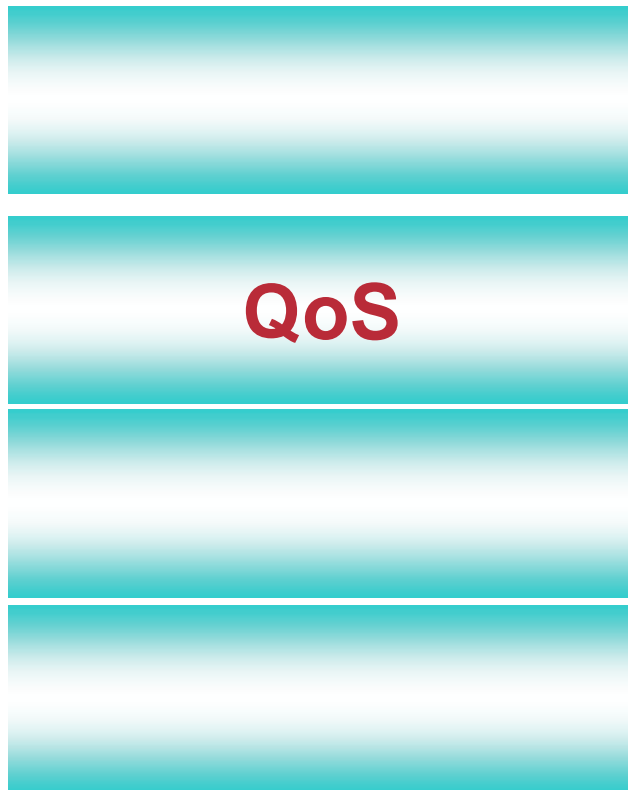


# IP

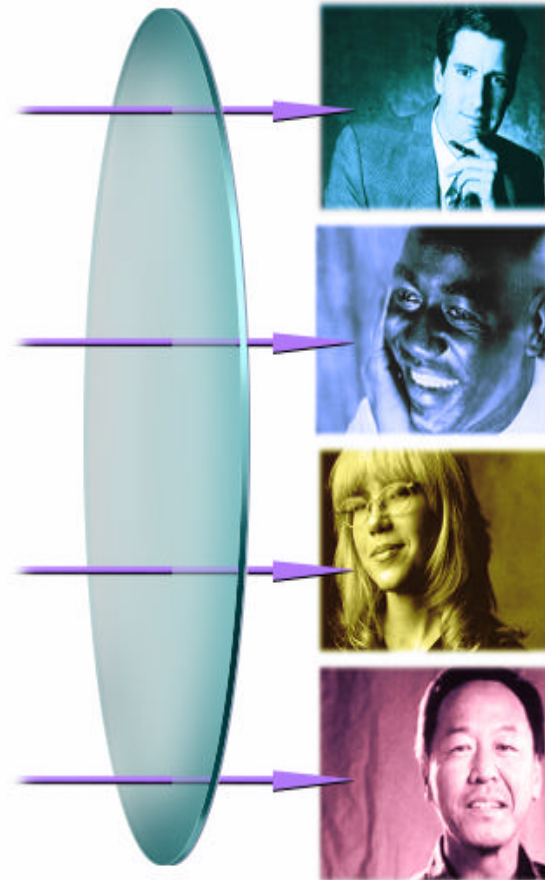


# IP

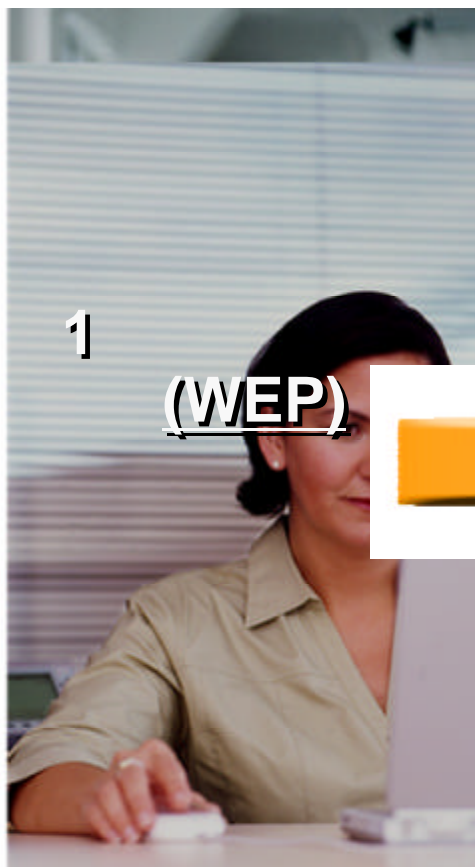
# 가 ?



One Integrated Network

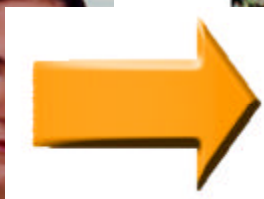


, ,

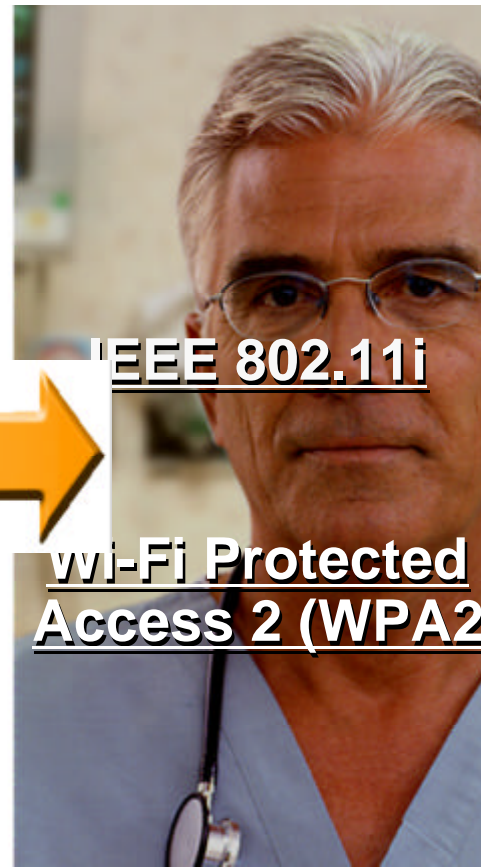


1

WEP



Wi-Fi Protected Access (WPA)



IEEE 802.11i

Wi-Fi Protected Access 2 (WPA2)

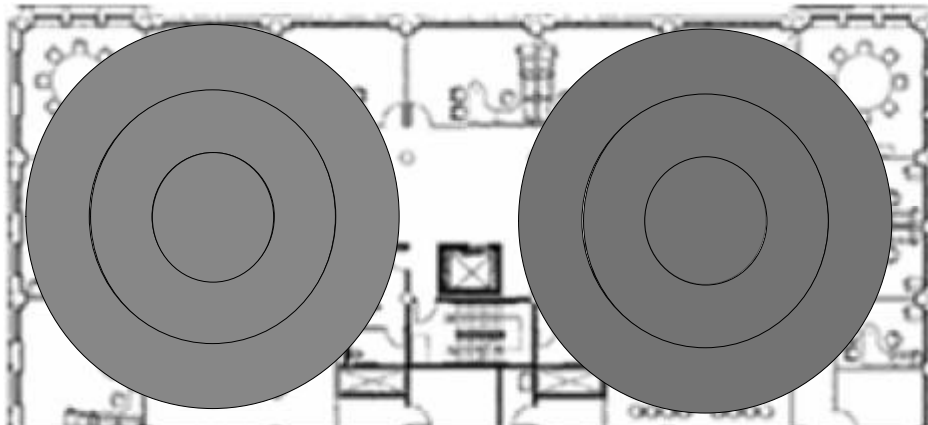
- 
- 802.1x
- WPA
- 가
- 가
- VLAN
- !

# Voice over WLAN

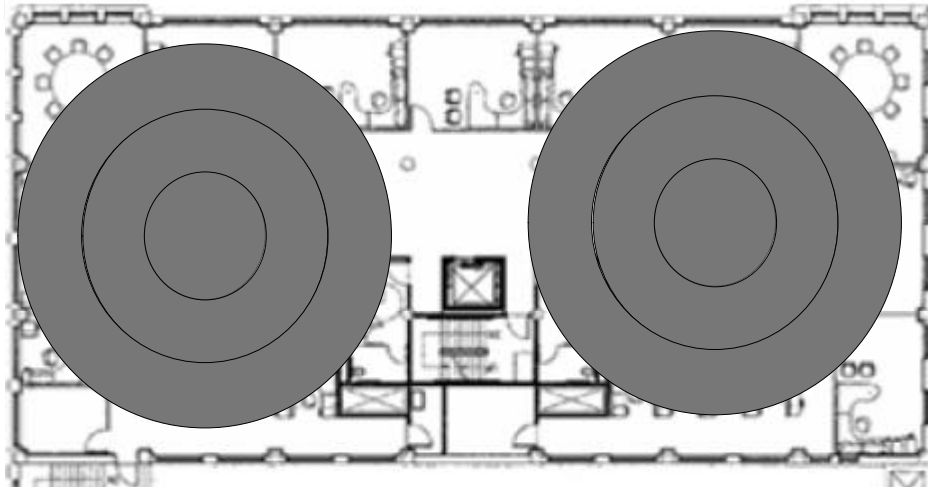


## End to End Intelligent Integration

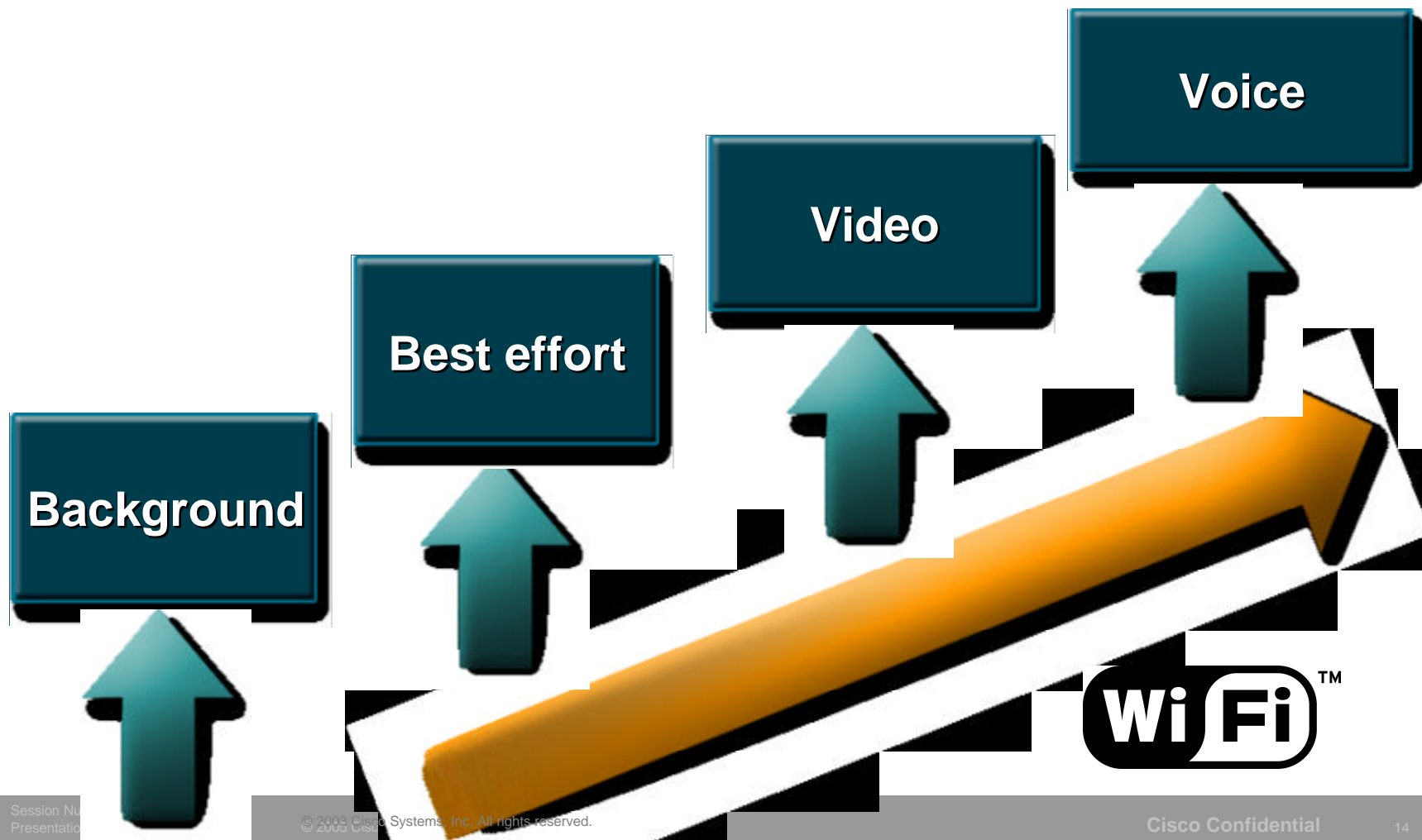




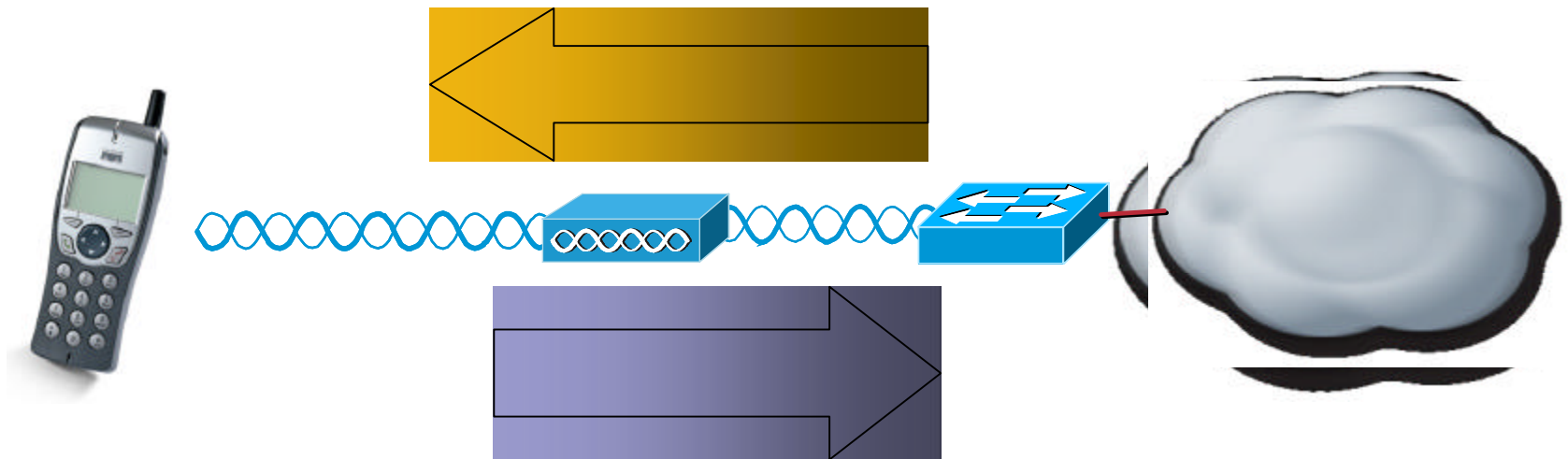
- 
- 
- 
- 
- 
- 



# WiFi QoS (WMM)



# QoS



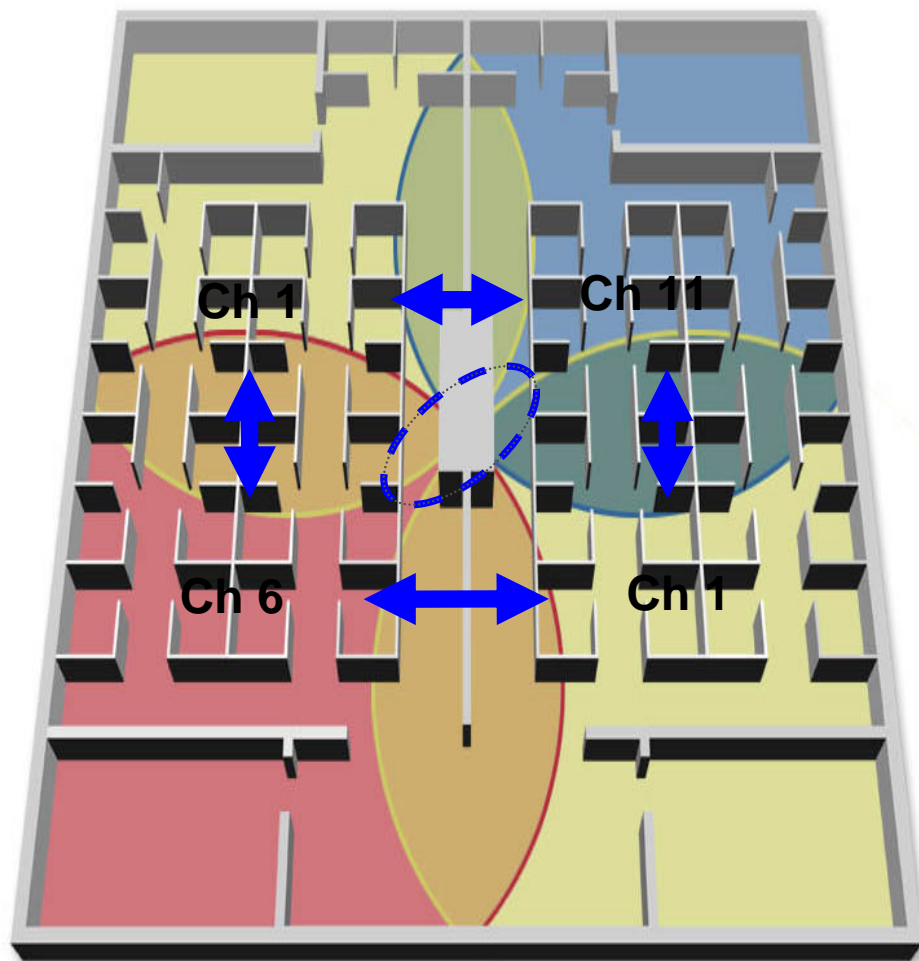
**End to End QoS**

• + =

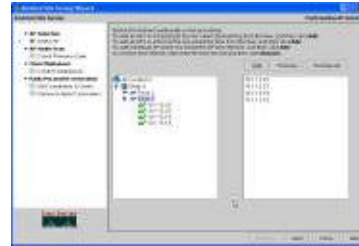
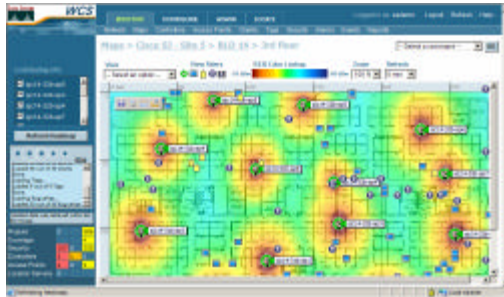
• 150msec

• 가

‘ , ’



# RF



API/



# Voice over WLAN



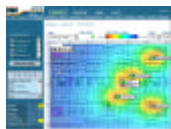
- 
- 
- - - QoS
- 
- RF 가 SI

# VoWLAN





Wireless Control System



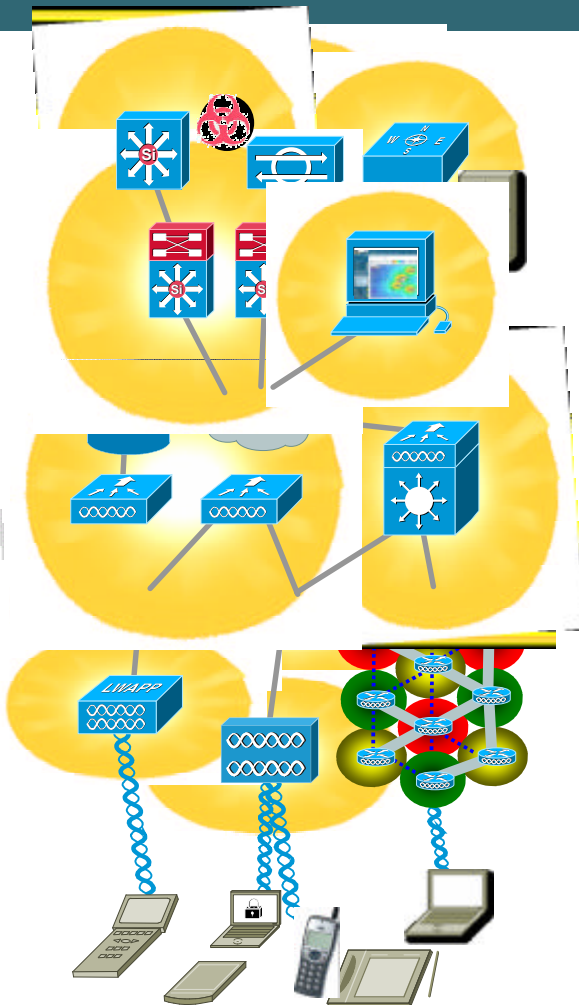
6K  
4400/2006



AP 1000, 1100,  
1200, 1500



CCX



/Wi-Fi VoIP,

-

(

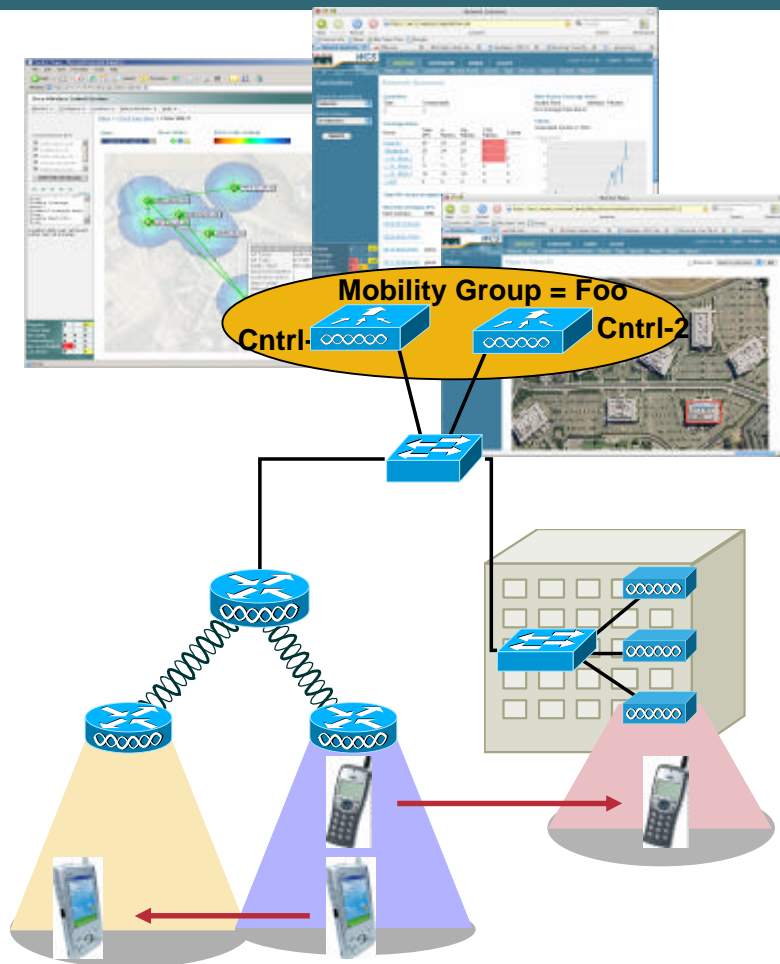
)

, 60%

=

95% CCX





•

?

- -

-

•

/

IETF-LWAPP

•

가 (Self-Configuring),  
가 (Self-Healing)

-

Adaptive Wireless Path (AWP)

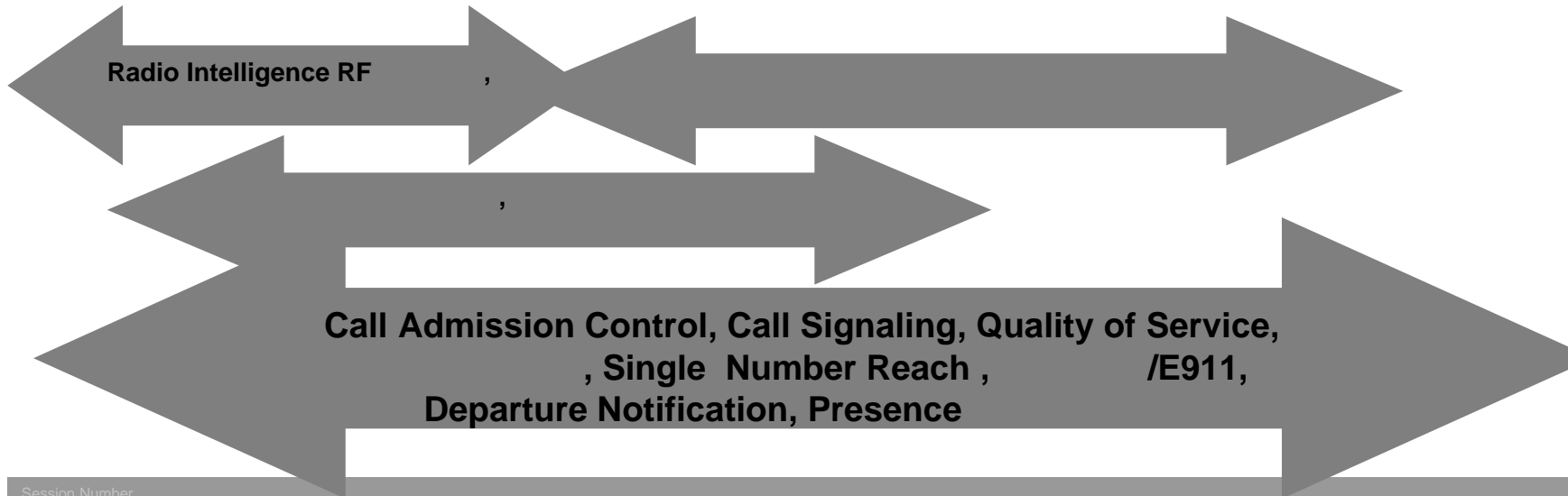
-

•

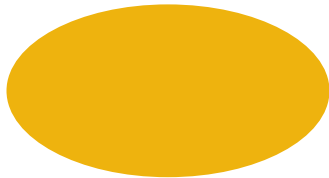
•

L3

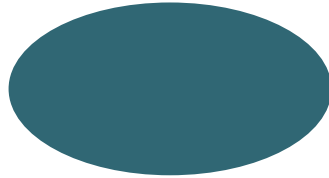
# VoWLAN



# VoWLAN

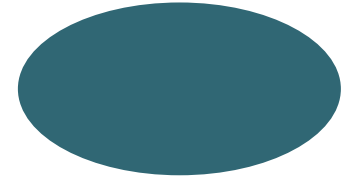


**Call Admission  
Control  
Presence Awareness**

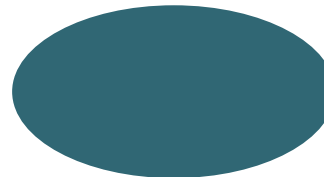
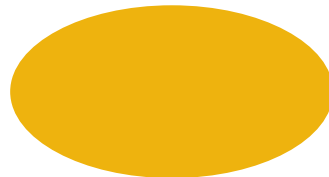


**QoS**

- -



**&**



, ,



**WPA/WPA2**

## - Cisco Compatible Extensions

QoS



# VoWLAN / 가

- 2
- 3
- **Transmit Power Sync**

가

- **Proxy ARP**

가

- **QoS**

AP

.1p/Q

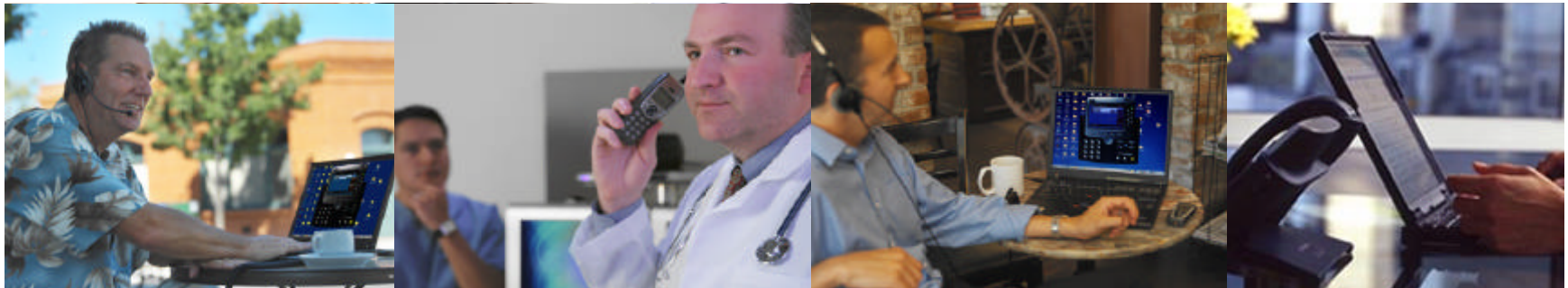
802.11e Pre-standard QoS



CCX

# VoWLAN

- , RF
- 
- IP
- ‘ , ROI
- ,



---

**CISCO SYSTEMS**

